

# 5,08mm EuroMate® Pluggable PCB Terminal Block

## Description

The series 94, EuroMate® pluggable PCB barrier terminal strip offers ruggedness and versatility in a high density format.

The patented design is fully mateable with Beau Eurostyle® Series 90 terminal blocks as well as most competitive 5,08mm pin headers. Worldwide specifications and user preferences can now be satisfied with the interchangeable selection of Beau Eurostyle® and EuroMate® products.

The terminal block is rated for 12 AWG wires and up to 15 Amps.

Made in the USA in our ISO 9001 certified facility, all Beau products embody the highest quality, using the finest materials and world class manufacturing processes. They meet or exceed all applicable industry standards.

## Features

- **No special tools**, the EuroMate® terminal block works with a common 1/4" blade or #2 Phillips screwdrivers.
- **Rugged and durable**, 94 series can withstand in excess of 12 inch-lbs. of tightening torque, much more than other 5,08mm terminal blocks.
- **Accepts 1/4" wire lugs**. EuroMate® offers a degree of versatility unique among 5,08mm terminal blocks.
- **Mates with most 5,08mm pin headers**. The EuroMate® offers a new dimension of flexibility to industrial electronics I/O selection.



U.S. Patent No. 5,713,766

## PRODUCT RATINGS

<b>UL</b>	Class B	15 Amps @ 300 V	12 AWG
	Class C	10 Amps @ 300 V	12 AWG
<b>CSA</b>		15 Amps @ 300 V	12 AWG
<b>IEC 947-7-1</b>		15 Amps @ 400 V	2,5mm <sup>2</sup>

## AGENCY LISTINGS

<b>UL pending</b>	File No. E48521
	Guide No. XCFR2
<b>CSA pending</b>	File No. 025562

## TECHNICAL SPECIFICATIONS

<b>ELECTRICAL</b>	
DWV	4500 VDC
IR	>3000 Megohms
<b>MECHANICAL</b>	
Tightening torque	7 in.-lbs.
Maximum torque	12 in.-lbs.
Wire strip length	1/4"
Wire Range	12 to 22 AWG

## ENVIRONMENTAL

Continuous Use Temp	
RTI electrical	130°C
RTI mechanical w/o impact	95°C

## MATERIALS

Insulator	Nylon 6.6, UL94V-0, black
Terminal	Phosphor bronze, Hot tin dip
Screws	M3,5 steel, w/clamp washer, zinc chromate plate

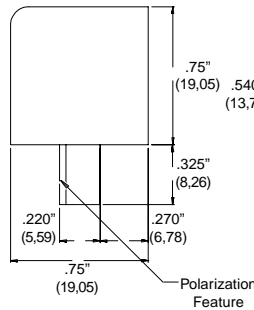
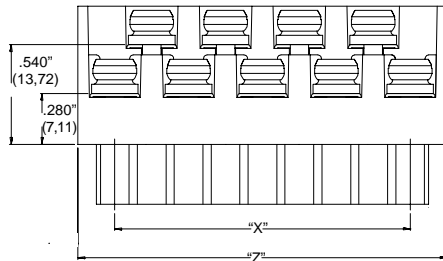
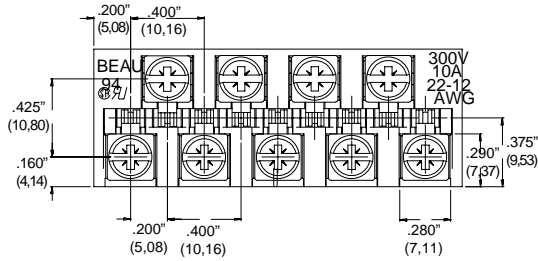
## OPTIONS

-G30	30μ in. gold plated terminals
------	-------------------------------

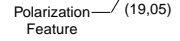
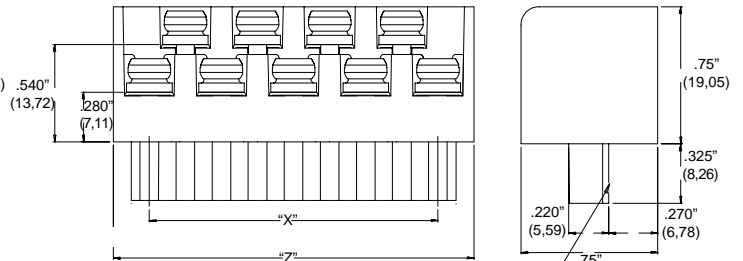
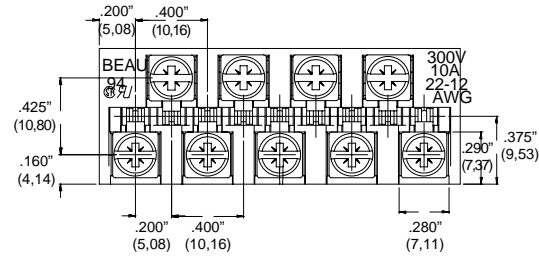
## HOW TO ORDER

9	4	X	X	X	X	-	X	X	
SERIES	STYLE	NO. OF		OPTIONS					
	08	POLES							
	09	3 to 24		(Dash#'s above)					

Style 08



Style 09



Part Number	X		Z	
	in	mm	in	mm
940803	.40	10,2	.80	20,3
940804	.60	15,2	1.00	25,4
940805	.80	20,3	1.20	30,5
940806	1.00	25,4	1.40	35,6
940807	1.20	30,5	1.60	40,6
940808	1.40	35,6	1.80	45,7
940809	1.60	40,6	2.00	50,8
940810	1.80	45,7	2.20	55,9
940811	2.00	50,8	2.40	61,0
940812	2.20	55,9	2.60	66,0
940813	2.40	61,0	2.80	71,1
940814	2.60	66,0	3.00	76,2
940815	2.80	71,1	3.20	81,3
940816	3.00	76,2	3.40	86,4
940817	3.20	81,3	3.60	91,4
940818	3.40	86,4	3.80	96,5
940819	3.60	91,4	4.00	101,6
940820	3.80	96,5	4.20	106,7
940821	4.00	101,6	4.40	111,8
940822	4.20	106,7	4.60	116,9
940823	4.40	111,8	4.80	121,9
940824	4.60	116,9	5.00	127,0

Part Number	X		Z	
	in	mm	in	mm
940903	.40	10,2	.80	20,3
940904	.60	15,2	1.00	25,4
940905	.80	20,3	1.20	30,5
940906	1.00	25,4	1.40	35,6
940907	1.20	30,5	1.60	40,6
940908	1.40	35,6	1.80	45,7
940909	1.60	40,6	2.00	50,8
940910	1.80	45,7	2.20	55,9
940911	2.00	50,8	2.40	61,0
940912	2.20	55,9	2.60	66,0
940913	2.40	61,0	2.80	71,1
940914	2.60	66,0	3.00	76,2
940915	2.80	71,1	3.20	81,3
940916	3.00	76,2	3.40	86,4
940917	3.20	81,3	3.60	91,4
940918	3.40	86,4	3.80	96,5
940919	3.60	91,4	4.00	101,6
940920	3.80	96,5	4.20	106,7
940921	4.00	101,6	4.40	111,8
940922	4.20	106,7	4.60	116,9
940923	4.40	111,8	4.80	121,9
940924	4.60	116,9	5.00	127,0